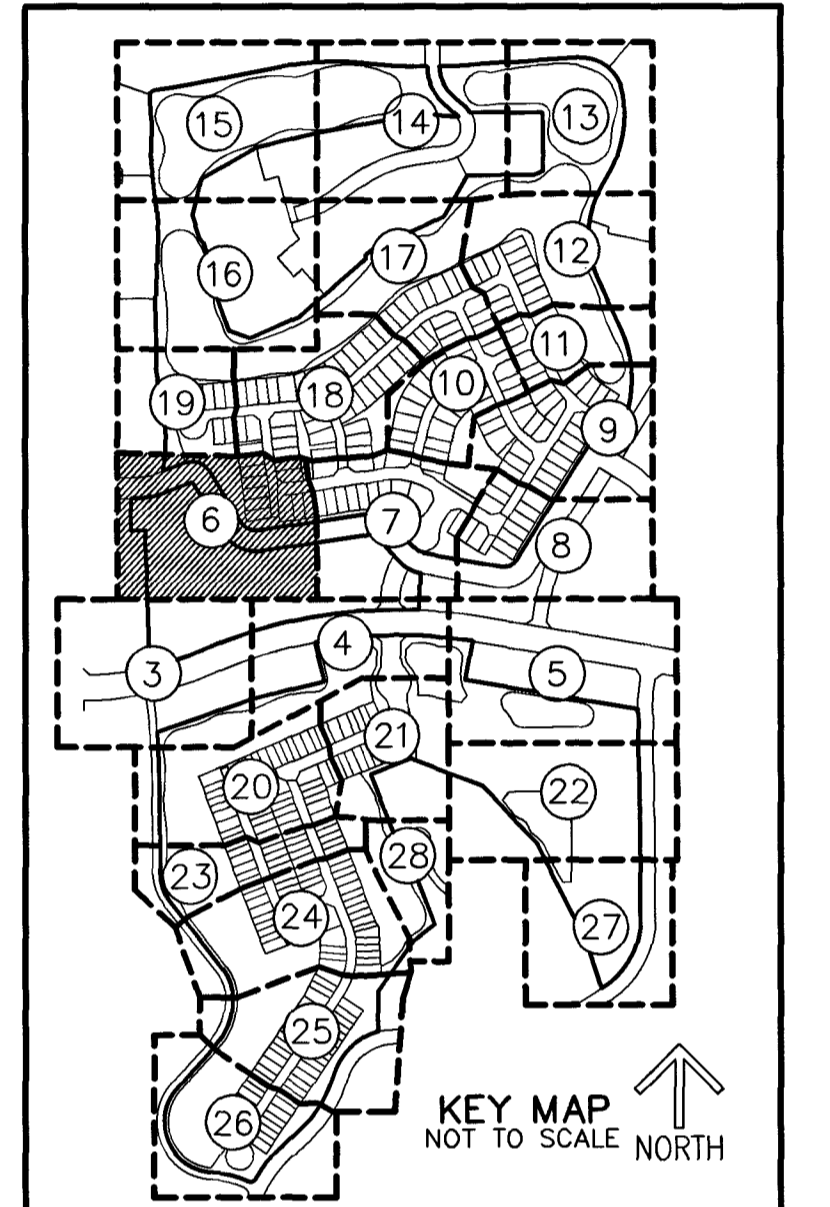


40

SHEET 6 OF 28



NOTES
COORDINATES, BEARINGS AND DISTANCES
 COORDINATES SHOWN ARE GRID
 DATUM = NAD 83 (NO ADJUSTMENT)
 ZONE = FLORIDA EAST
 LINEAR UNIT = US SURVEY FEET
 COORDINATE SYSTEM 1983 STATE PLANE
 TRANSVERSE MERCATOR PROJECTION
 ALL DISTANCES ARE GROUND UNLESS OTHERWISE NOTED
 SCALE FACTOR = 1.000032158
 GROUND DISTANCE X SCALE FACTOR = GRID DISTANCE
 BEARINGS AS SHOWN HEREON ARE GRID DATUM,
 NAD 83 (1990 ADJUSTMENT), FLORIDA EAST ZONE.

LEGEND / ABBREVIATIONS
 C - CENTERLINE
 Δ - DELTA (CENTRAL ANGLE)
 CB - CHORD BEARING
 CD - CHORD DISTANCE
 DE - DRAINAGE EASEMENT
 E - EASTING (WHEN USED WITH COORDINATES)
 FPL - FLORIDA POWER & LIGHT COMPANY
 L - ARC LENGTH
 LB - LICENSED BUSINESS
 LMAE - LAKE MAINTENANCE ACCESS EASEMENT
 LME - LAKE MAINTENANCE EASEMENT
 LSE - LIFT STATION EASEMENT
 L.W.D.D. - LAKE WORTH DRAINAGE DISTRICT
 N - NORTHING (WHEN USED WITH COORDINATES)
 MOHE - MAINTENANCE AND OVERHANG EASEMENT
 O.R.B. - OFFICIAL RECORD BOOK
 PDE - PUBLIC DRAINAGE EASEMENT
 PRAS - PRIVATE RESIDENTIAL ACCESS STREET
 PBOUE - PALM BEACH COUNTY UTILITY EASEMENT
 PC - POINT OF CURVATURE
 PCC - POINT OF COMPOUND CURVATURE
 PNT - POINT OF NON-TANGENCY
 PRC - POINT OF REVERSE CURVATURE
 PT - POINT OF TANGENCY
 PUD - PLANNED UNIT DEVELOPMENT
 R - RADIUS
 SWE - SIDEWALK EASEMENT
 UE - UTILITY EASEMENT
 ► - INDICATES "ZERO" SIDE OF LOT LINE
 ■ PRM - DENOTES SET PERMANENT REFERENCE MONUMENT
 4" x 4" x 24" CONCRETE MONUMENT WITH
 ALUMINUM DISK STAMPED "C&W PRM LB3591"
 UNLESS OTHERWISE NOTED
 ● PCP - DENOTES PERMANENT CONTROL POINT
 SET NAIL AND METAL DISK STAMPED "PCP LB3591"
 ▲ - DENOTES SET PERMANENT REFERENCE MONUMENT
 NAIL AND DISC STAMPED "PRM" LB 3591

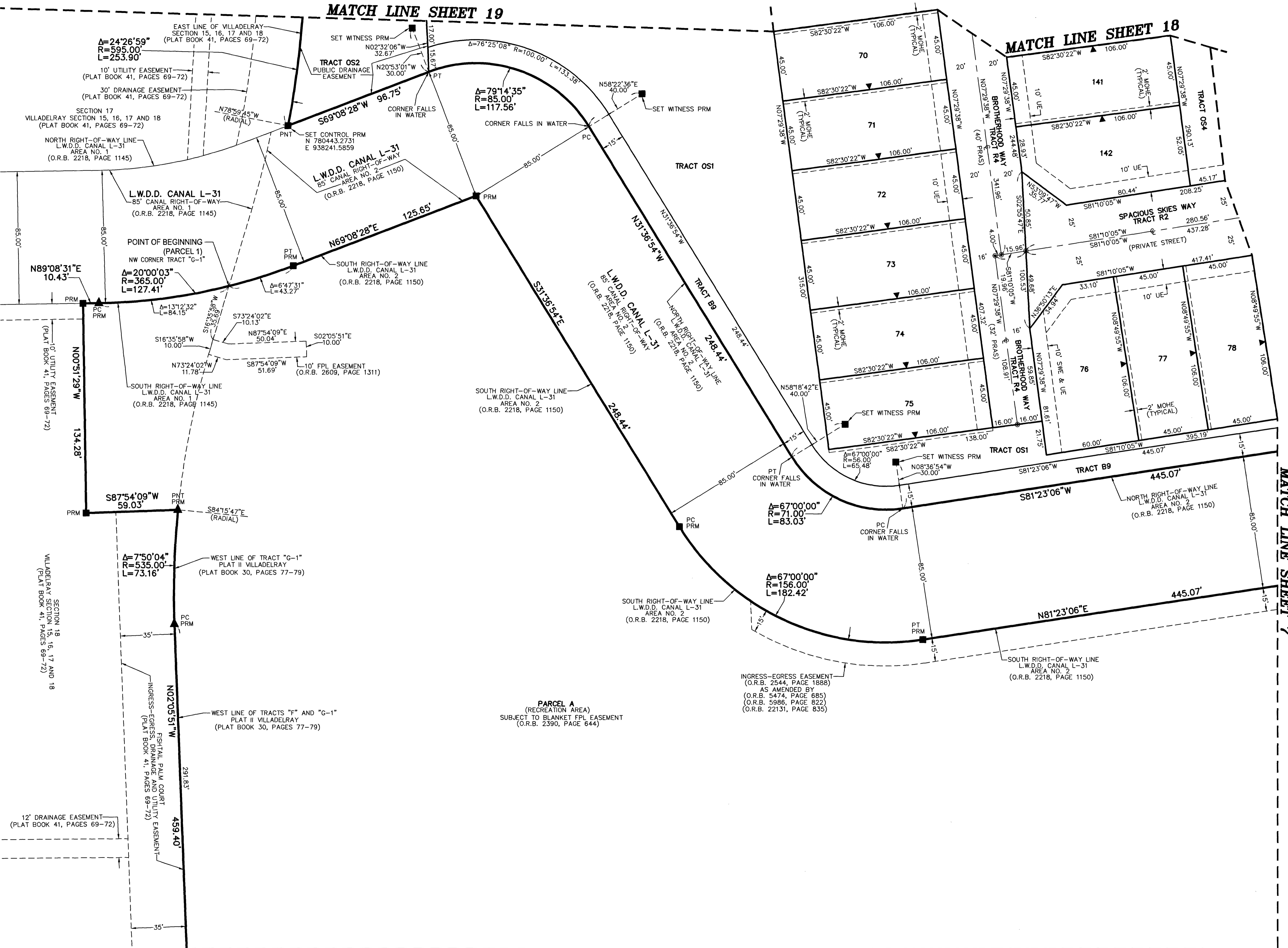
DELRAY TRAILS AT VILLA DELRAY PUD

BEING A REPLAT OF ALL OF TRACTS "F", "G" AND "G-1", PLAT II VILADELRAY,
AS RECORDED IN PLAT BOOK 30, PAGES 77 THROUGH 79 OF THE PUBLIC RECORDS OF PALM BEACH COUNTY, FLORIDA,
TOGETHER WITH PORTIONS OF SECTION 11, TOWNSHIP 46 SOUTH, RANGE 42 EAST,
ALL LYING IN SECTION 11, TOWNSHIP 46 SOUTH, RANGE 42 EAST, PALM BEACH COUNTY, FLORIDA

THIS INSTRUMENT PREPARED BY
DAVID P. LINDLEY
OF
CAULFIELD and WHEELER, INC.
SURVEYORS - ENGINEERS - PLANNERS
7900 GLADES ROAD, SUITE 100
BOCA RATON, FLORIDA 33434 - (561)392-1991
CERTIFICATE OF AUTHORIZATION NO. LB3591

MATCH LINE SHEET 19

MATCH LINE SHEET 18



MATCH LINE SHEET 3

MATCH LINE SHEET 4

EAST LINE OF VILADELRAY SECTION 15, 16, 17 AND 18 (PLAT BOOK 41, PAGES 69-72)
 Δ=24°26'59" R=595.00' L=253.90'
 10' UTILITY EASEMENT (PLAT BOOK 41, PAGES 69-72)
 30' DRAINAGE EASEMENT (PLAT BOOK 41, PAGES 69-72)
 SECTION 17 VILADELRAY SECTION 15, 16, 17 AND 18 (PLAT BOOK 41, PAGES 69-72)
 NORTH RIGHT-OF-WAY LINE L.W.D.D. CANAL L-31 AREA NO. 1 (O.R.B. 2218, PAGE 1145)
 L.W.D.D. CANAL L-31 85' CANAL RIGHT-OF-WAY AREA NO. 1 (O.R.B. 2218, PAGE 1145)
 POINT OF BEGINNING (PARCEL 1) NW CORNER TRACT "G-1"
 Δ=20°00'03" R=365.00' L=127.41'
 N89°08'31"E 10.43'
 Δ=13°12'32" L=84.15'
 S16°35'58"W 10.00'
 N73°24'02"W 11.78'
 S87°54'09"W 51.69'
 SOUTH RIGHT-OF-WAY LINE L.W.D.D. CANAL L-31 AREA NO. 2 (O.R.B. 2218, PAGE 1145)
 SOUTH RIGHT-OF-WAY LINE L.W.D.D. CANAL L-31 AREA NO. 2 (O.R.B. 2609, PAGE 1311)
 10' FPL EASEMENT (O.R.B. 2609, PAGE 1311)
 S87°54'09"W 59.03'
 S84°15'47"E (RADIAL)
 Δ=7°50'04" R=535.00' L=73.16'
 WEST LINE OF TRACT "G-1" PLAT II VILADELRAY (PLAT BOOK 30, PAGES 77-79)
 SECTION 18 VILADELRAY SECTION 15, 16, 17 AND 18 (PLAT BOOK 41, PAGES 69-72)
 WEST LINE OF TRACTS "F" AND "G-1" PLAT II VILADELRAY (PLAT BOOK 30, PAGES 77-79)
 INGRESS-EGRESS EASEMENT (PLAT BOOK 41, PAGES 69-72)
 12' DRAINAGE EASEMENT (PLAT BOOK 41, PAGES 69-72)

PARCEL A
(RECREATION AREA)
SUBJECT TO BLANKET FPL EASEMENT
(O.R.B. 2390, PAGE 644)

INGRESS-EGRESS EASEMENT
(O.R.B. 2544, PAGE 1888)
AS AMENDED BY
(O.R.B. 5474, PAGE 685)
(O.R.B. 5986, PAGE 822)
(O.R.B. 22131, PAGE 835)

SOUTH RIGHT-OF-WAY LINE
L.W.D.D. CANAL L-31
AREA NO. 2
(O.R.B. 2218, PAGE 1150)

NORTH RIGHT-OF-WAY LINE
L.W.D.D. CANAL L-31
AREA NO. 2
(O.R.B. 2218, PAGE 1150)

SECTION 18 VILADELRAY SECTION 15, 16, 17 AND 18 (PLAT BOOK 41, PAGES 69-72)

FISHTAIL PALM COURT
INGRESS-EGRESS, DRAINAGE AND UTILITY EASEMENT
(PLAT BOOK 41, PAGES 69-72)

SOUTH RIGHT-OF-WAY LINE
L.W.D.D. CANAL L-31
AREA NO. 2
(O.R.B. 2218, PAGE 1150)

SOUTH RIGHT-OF-WAY LINE
L.W.D.D. CANAL L-31
AREA NO. 2
(O.R.B. 2218, PAGE 1150)

L.W.D.D. CANAL L-31
85' CANAL RIGHT-OF-WAY
AREA NO. 2
(O.R.B. 2218, PAGE 1150)

L.W.D.D. CANAL L-31
85' CANAL RIGHT-OF-WAY
AREA NO. 1
(O.R.B. 2218, PAGE 1145)

SECTION 17 VILADELRAY SECTION 15, 16, 17 AND 18 (PLAT BOOK 41, PAGES 69-72)

EAST LINE OF VILADELRAY SECTION 15, 16, 17 AND 18 (PLAT BOOK 41, PAGES 69-72)
Δ=24°26'59" R=595.00' L=253.90'

TRACT OS2 PUBLIC DRAINAGE EASEMENT

SET CONTROL PRM
N 780443.2731
E 938241.5859

TRACT OS1

TRACT OS1

TRACT OS1

TRACT OS1

TRACT OS1

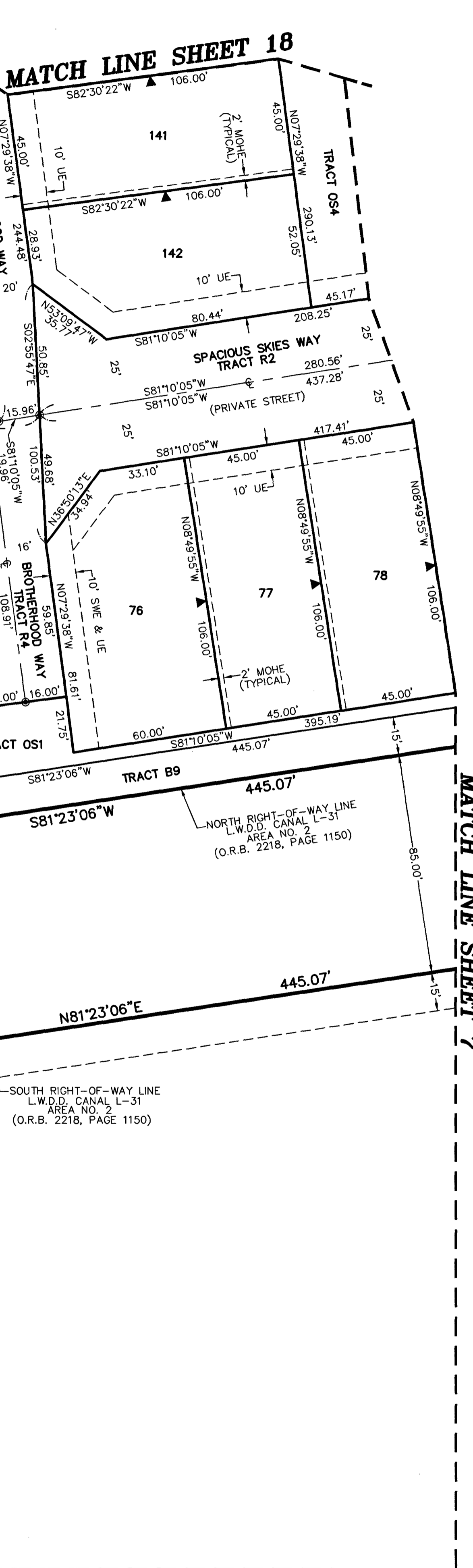
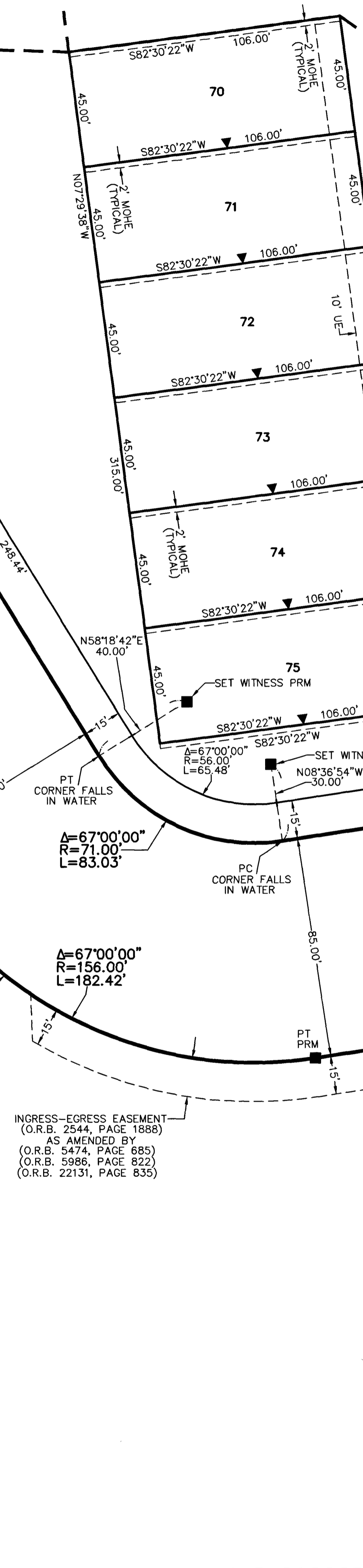
TRACT OS1

TRACT OS1

TRACT OS1

TRACT OS1

TRACT OS1



MATCH LINE SHEET 7